

CARAT

MAINTENANCE & DEVELOPMENT

PROFILE



TABLE OF CONTENTS

♦ INTRODUCTION, COMPANY OVERVIEW AND OWNERSHIP	2
♦ MANAGEMENT AND STAFFING OVERVIEW	3
♦ Maintenance and Development Team	
♦ Director	
♦ SKILLS, EXPERTISE AND EXPERIENCE	4
♦ ONGOING TRAINING, DEVELOPMENT AND SKILLS TRANSFER	5
♦ SERVICES	5
♦ PORTFOLIO OF PROJECTS SUBCONTRACTED ON, COMPLETED AND ONGOING	6
♦ Property Developments	
♦ Commercial Properties	
- New Developments	
♦ Residential Properties	
- Sectional Title Complexes	
- Duets	
- Free Standing Homes	
♦ MAINTENANCE, SERVICING AND REPAIR SERVICES	8
♦ Our Client Base and Services	
- Property Practitioners	
- Kaizen Realtors	
♦ Hospitality and Fast Food Service Industry	
♦ Specialised Services	

ADDING VALUE

INTRODUCTION, COMPANY OVERVIEW AND OWNERSHIP

Carat Maintenance and Development (Pty) Ltd is a Level 3 BBBEE renovation, restoration, and construction company that specialises in repairs, and general maintenance in the structural, plumbing, cooling, electrical, and carpentry fields.

Our focus has always been to provide superior quality, reliable, professional, reasonably priced, and swift service to clients.

Carat Maintenance & Development grew its business interest when it bought Mr Carat Bloemfontein (Pty) Ltd as a going concern. This allowed and enabled it to enter and tap into this growing and dynamic market and allowed it to start operating immediately with an active and growing client base. Embedded in this new venture and journey is our vision to enable, upskill, educate, and create more black artisans, not only to create employment for the black artisans but also to enable them to become entrepreneurs themselves.

With our head office based in Bloemfontein we have a well-established footprint in the Free State – with a focus in and on the Bloemfontein area and the Northern Cape. We make use of subcontractors in Gauteng and the Western Cape. Our subcontractors need to undergo and meet our stringent vetting process to ensure and assure that they always meet our non-negotiable requirements of a superior quality and professional service to clients.

Our ultimate aim is to become the service provider of choice by enhancing our reputation and building the trust that will lead to the creation and protection of value for clients and stakeholders alike.

MANAGEMENT AND STAFFING OVERVIEW

EXECUTIVE DIRECTOR LLENICHCA VAN WYK



Llenichca is an accomplished legal professional with her focus areas on commercial, insurance and financial law. She is well experienced with fast tracked technical, theoretical and also practical knowledge in these fields with a particular focus on compliance. She is expeditiously gaining great exposure and experience growing her practical knowledge and insights in the fields of maintenance and development.

MAINTENANCE & DEVELOPMENT TEAM



Teamwork being one of the key successes contributes greatly towards the overall performance and successes of the company. Other aspects focused on at all times include maintaining above expectation quality standards, delivering according to agreed upon timelines and within budget, whilst also ensuring company compliance on regulatory matters including safety procedures, occupational health as well as environment prescriptions. All of this contributes towards client satisfaction on all levels.

The Management Team comprise out of operation/site managers, administration managers as well as maintenance technician; all specialists in their own fields.

SKILLS, EXPERTISE AND EXPERIENCE

The company strives to continually bolster its team's capacity by employing highly skilled & experienced individuals bringing an assortment of expertise onboard. They collectively have in excess of 80 years' experience in the construction and maintenance industry. This includes particular expertise in the areas of plumbing (All maintenance and repairs including the installation of geysers, etc.), electrical (All minor maintenance and repairs on properties as well as gate motors, garage door motors and electrical fencing. In conjunction with our qualified electrical subcontracting partners we can do rewiring and major electrical maintenance and repairs.), building and finishes, specialised installations as well as ongoing maintenance, servicing; and repairs.

The company has also successfully branched out into the maintenance/servicing and repairs of a variety of specialised equipment and facilities within the hospitality, catering and fast-food services sectors. Our team members are certified to work on all McDonald equipment, KFC equipment, Taylor machines, coffee machines, ice cream machines, grillers, fryers, cooler & freezer rooms and continually attend training courses to expand the range.

ONGOING TRAINING, DEVELOPMENT AND SKILLS TRANSFER

Carat Maintenance & Development is committed towards training, ongoing, up-skilling and development of all staff. This is clearly evident in the number of training courses attended by individuals and financial investment. This adding expertise, experience and expanding on the array of services made available to clients. Suppliers and external expertise are regularly brought in to provide staff within service and onsite training, the transfer of skills with development opportunities at both theoretical and practical levels.

SERVICES

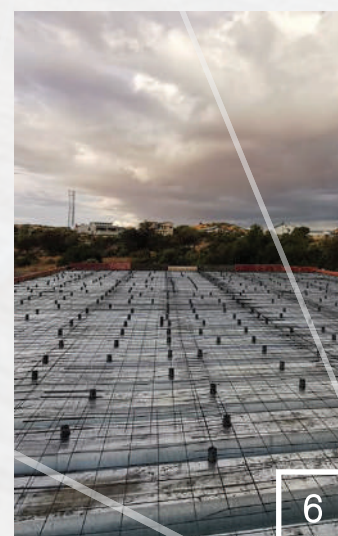
- ♦ Plumbing – All aspects of maintenance, repairs, and installation, including geysers.
- ♦ Electrical – All aspects of maintenance, repairs, rewiring as well as new electrical installations in an assortment of buildings and structures.
- ♦ Building and Construction – All aspects of brickwork, concreting, plastering, painting, tiling, windows, door frames and other forms of installations.
- ♦ Dry walling, Ceilings & Partitioning – All aspects of installation and repairs.
- ♦ Assortment of Floors – Installation, repairs and maintenance including sanding and varnishing.
- ♦ General Building Alterations, repairs, and structural improvements.

PORTFOLIO OF PROJECTS SUBCONTRACTED ON, COMPLETED AND ONGOING

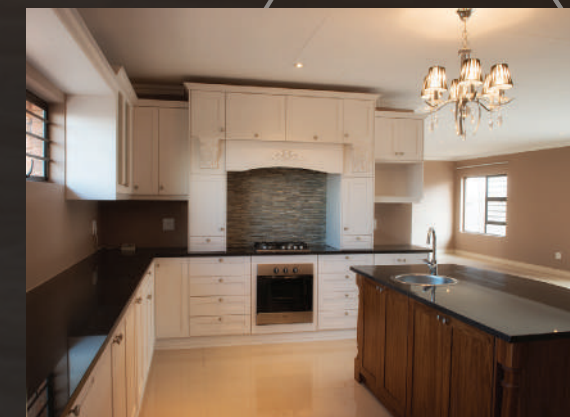
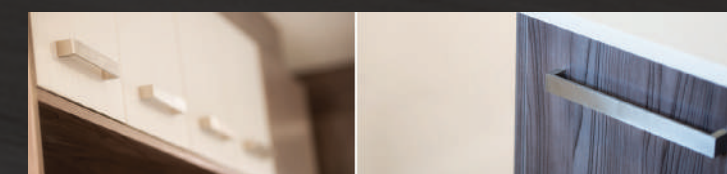
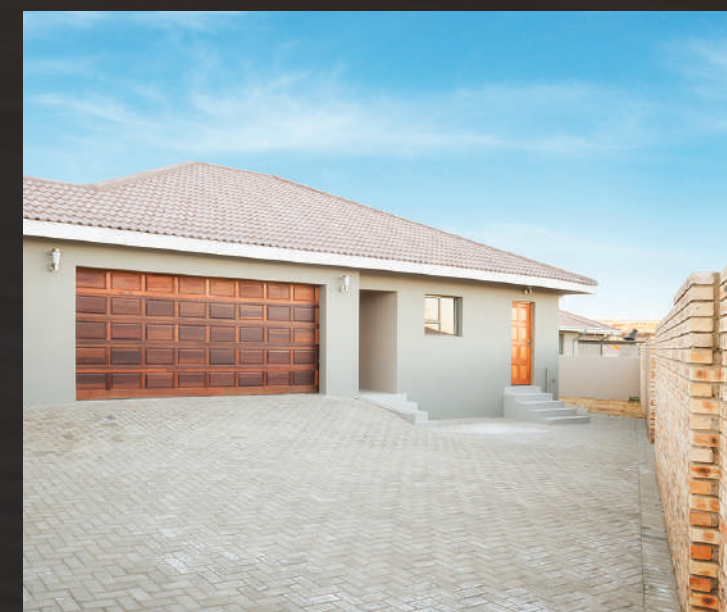
PROPERTY DEVELOPMENTS SUBCONTRACTED FOR

Commercial Properties
New Developments:

- ♦ Third Age Group -
Head Office Building
Project Value: R35 000 000



6



Residential Developments

Latest Projects

Sectional Title Complexes:

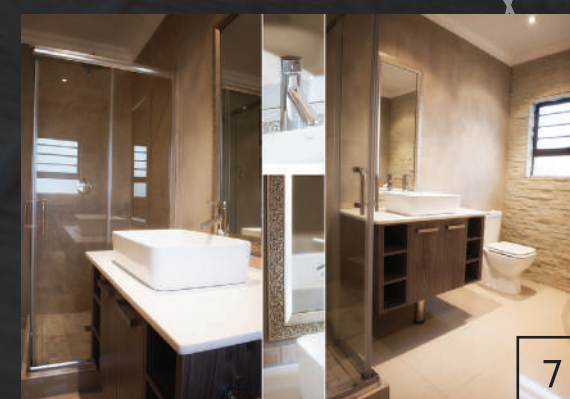
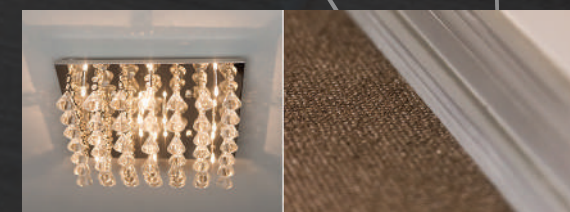
- ♦ Lemonwood - 22 Units
Project Value : R50 000 000
- ♦ Olea Collis BC
(Wild Olive Estate) - 22 Units
Project Value: R40 000 000

Duets:

- ♦ Hillside - 54 Units
Project Value: R4 000 000 p/duet
R2 000 000 p/unit
- ♦ Somerton Estate - 6 Units
Project Value: R4 750 000 p/duet
R2 375 000 p/unit

Free Standing Home:

- ♦ Kersbossie Street
Project Value: R3 000 000



7



MAINTENANCE, SERVICING AND REPAIR SERVICES

Carat Maintenance & Development have an assortment of clients, from property to hospitality and other specialised services.

OUR CLIENT BASE AND SERVICES

PROPERTY PRACTITIONERS:

Kaizen Realtors

- ♦ The property portfolio under their direct management is currently in excess of 169 units, made up of free standing residences, duets, sectional title and commercial properties.
- ♦ Carat Maintenance & Development has been attending to all maintenance, repairs and servicing of this entire portfolio for quite some time. Much of their success can be attributed to preventative maintenance and timeous resolving of issues ensuring cost effectiveness at all times.

HOSPITALITY AND FAST FOOD SERVICE INDUSTRY

Carat Maintenance & Development have numerous clients in this sector. Servicing, maintaining and repairing a number of their industrial catering equipment, appliances such as coffee machines, ice cream machines and freezer rooms on an ongoing basis as per signed service level agreements.

SPECIALIZED SERVICES

All aspects of electrical fencing, electrical gate motors and electric garage motor installation, maintenance and repairs have been targeted as a growth opportunity within the company. Staff members regularly attend certified training courses to work on an assortment of products.

This provides the company with a steady stream of new business opportunities for the company.



ADDING VALUE

HEAD OFFICE

75 Lavender Lane, Somerton Estate, Bloemfontein
051 407 0800 | caratmd.co.za

DIRECTOR

Llenichca Van Wyk
082 443 1898 | lleenichcavanwyk@caratmd.co.za

HEAD OF TECHNICAL OPERATIONS

Bayman Bester
082 495 6187 | bayman@caratmd.co.za